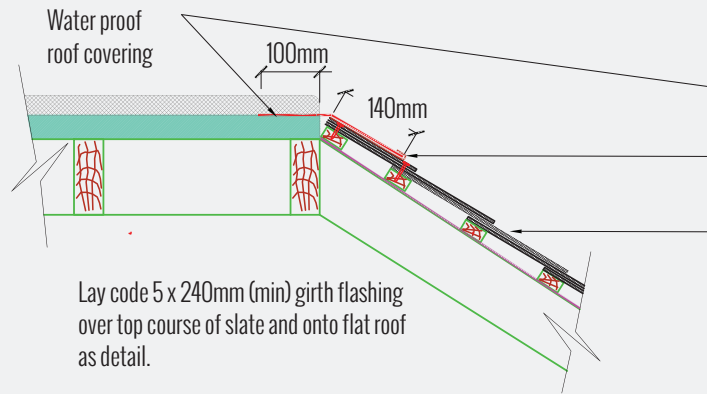


CAD Drawings

Abutments 1



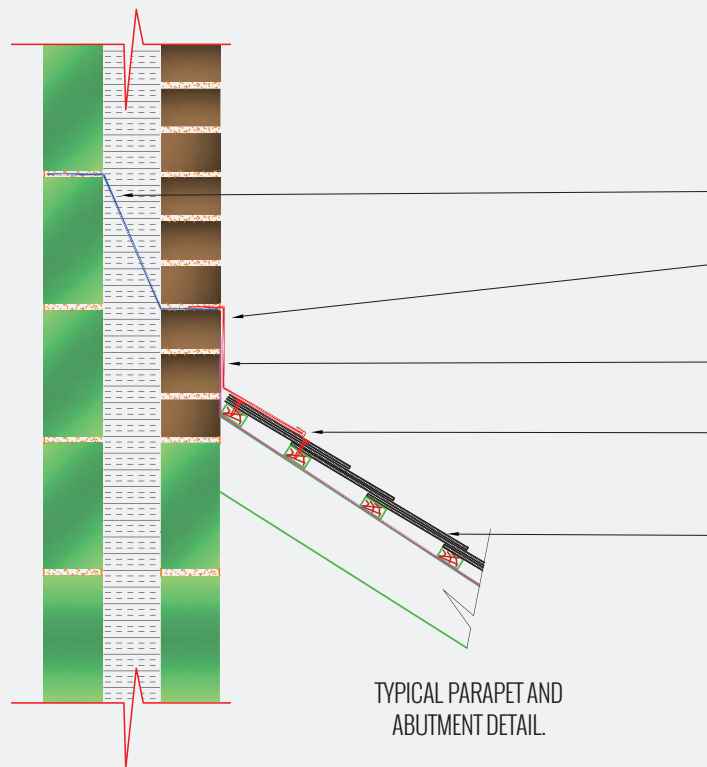
Lay code 5 x 240mm (min) girth flashing over top course of slate and onto flat roof as detail.

Code 5 lead flashing over slate and under water proof roof covering by a minimum of 100mm.

50mm wide copper straps at 300 - 500mm centres depending on exposure.

Fixing in accordance with manufacturer's printed instructions, BS5534:2014, BS8000-6 and H62 / 210 and 275.

TYPICAL ABUTMENTS TO FLAT ROOF DETAIL



Proprietary cavity tray across masonry cavity.

Code 4 lead apron flashing over slate and into mortar joint using lead wedges to secure in accordance with manufacturer's printed instruction, BS EN 12588.

Underlay turned up abutment by 100mm min. behind lead apron.

Fixing in accordance with manufacturer's printed instructions, BS5534:2014, BS8000-6 and H62 / 210 and 275.

TYPICAL PARAPET AND ABUTMENT DETAIL.

1. Cut slates required and interleave with code 3 lead soakers dressed to provide at least a 75mm upstand to form a close and weathertight abutment, fix soakers by turning down over head of each slate.
2. Fix code 4 lead flashing over soaker. Welt top edge, secure into the brickwork joints to a depth of 25mm with lead wedges and point in mortar.